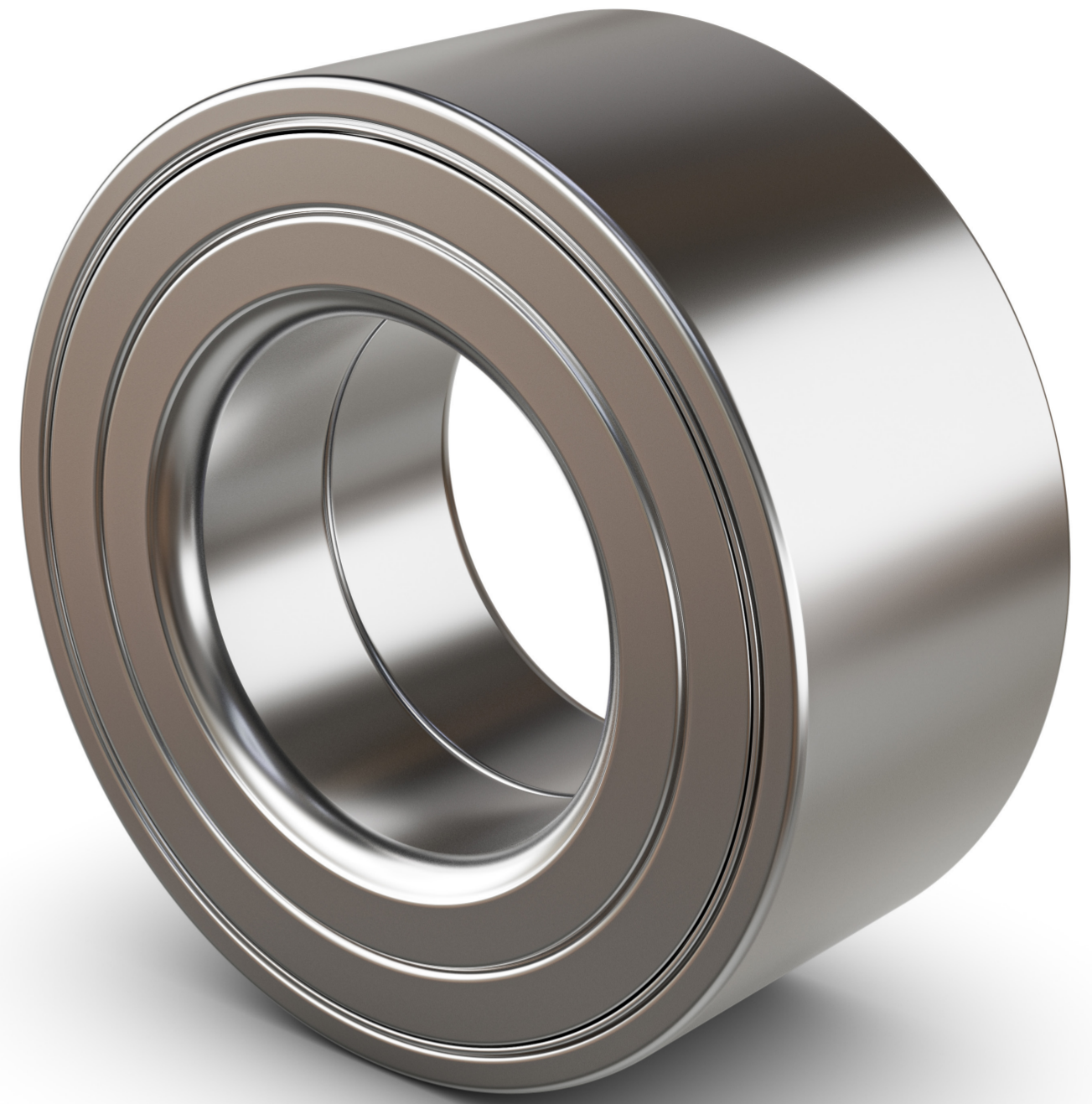


# GENERATION 1

## WHEEL BEARINGS

Wheel bearings are components that allow wheels to rotate freely around the axle, reducing friction and wear.

Generation 1 was the first wheel bearing unit on the market. It is available with both ball and tapered rollers.



### MAIN FEATURES

#### Outer Race (Cup)

This is a ring that sits inside the wheel hub. It is stationary and does not move.

#### Inner Race (Cone)

This is another ring that fits onto the axle. It rotates with the wheel.

#### Ball Bearings

These are small, round balls placed between the outer and inner races. They roll around, allowing the wheel to spin easily.

### HOW THEY WORK

#### Rotating

The inner race (cone) is attached to the axle which rotates as the vehicle moved. The outer race (cup) remains in place with the wheel hub.

#### Smooth Rotation

The ball bearings roll between the inner and outer races. This reduces friction between the axle and hub, allowing the wheel to rotate smoothly.

#### Maintenance

While known for its adjustability and durability, this type of bearing requires regular maintenance.

### CONTACT

01302 727 312  
info@nakata.uk

### CONNECT

[in](#) [ig](#) [fb](#) /nakatauk  
nakata.uk

**NAKATA<sup>®</sup>**  
**COUNT ON US**